

# *Pearl*



PRODUCT CATALOG  
2 0 1 2



**2012 Pearl Drum Catalog  
Table of Contents**

FORUM	2
VISION	6
SESSION STUDIO CLASSIC	12
MASTERS MCX	16
REFERENCE	20
REFERENCE PURE	26
MASTERWORKS	32
E-PRO	41
TRU-TRAC	45
REFERENCE SNARES	46
SIGNATURE SERIES	52
DEMON DRIVE	54
PEDALS	56
CYMBALS & STANDS	62
DRUM RACKS	64
PERCUSSION AND PARTS	67
COLORS	76





## It starts in the garage with friends. It starts with Forum.

It starts with Forum. Everyone has a beginning, and this is yours. Forum is the all-in-one concept that gets you started in style and ready to rock right out of the box. Whether it's your passion or a hobby, a profession or a habit, rhythm is inside of all of us. The Forum Series is your outlet, regardless of age or style, to let out your inner beast and express yourself.

Ideal for the beginning drummer, Forum Series features I.S.S tom mounts, low-mass lugs, quality brass cymbals and slick black hardware on two of the four flashy Forum finishes. Rugged double-braced hardware, a heavy-duty throne, and a pair of sticks accompany you on your journey to stardom. Enjoy the music you make with the thunderous birch and poplar blended shells of Forum. There's no better way to start your drumming career than with Pearl Forum Series.



Be the drummer.





No.31 Jet Black  
w/Black HW  
RT705HBCM

Easy to transport and easy to practice, the ground breaking concept kit Rhythm Traveler is a gigging and practice kit all in one. This complete 5pc kit includes professional quality 2 ply “ProTone” heads and 13” and 16” cymbals for live performance, and silent mesh heads and plastic cymbals for quiet practicing.



Rhythm Traveler Specification Chart		
Bass Drum	2008B	20"x8"
Tom Toms	1005T	10"x5"
	1205T	12"x5"
	1405T	14"x5"
	1305S	13"x5"
Crash -Ride Cymbal	CX216	16"
Hi-Hat Cymbals	CX213	13" (1pr.)
Cymbal Pads	RP-CP (x2)	for Ride and Hi-Hat Cymbals
Plastic Cymbals	RP-13PRC (for Ride)	
	RP-13PHH (for Hi-Hat)	
Heads	PTH-13 (Snare Drum)	
	PTH-10/PTH-12/PTH-14 (Tom Toms)	
	PTH-20EQ (Bass Drum)	
	MFH-13 (Snare Drum)	
Mesh Heads	MFH-10/MFH-12/MFH-14 (Tom Toms)	
	MFH-20 (Bass Drum)	
Tom Holders	TH-60 (x2), TH-60S	
Adapter	ADT-2	
Hi-Hat Stand	H-62W	
Snare Drum Stand	S-62W	
Cymbal Stand	C-62W	
Drum Pedal	P-62	

“I WAS RAISED TO ALWAYS BE A LEADER, THAT’S WHY I LOVE BEING THE DRUMMER. IT’S THE DRUMMER’S RESPONSIBILITY TO START THE SONG AT THE RIGHT TEMPO AND MAINTAIN OR FLUCTUATE THAT TEMPO IF NEEDED THROUGH THE DURATION OF THE SONG. SO BE A LEADER, NOT A FOLLOWER.”

-tre stafford ADELITAS WAY



## FORUM SERIES

No. 21 Smokey Chrome FZH725/C

When you buy Forum, you’re buying Pearl Quality. That’s because Forum Series drums are built using Pearl’s Superior Shell Technology (SST), the same process that’s used on Masterworks and Reference to guarantee that you’re getting the finest shells in the industry. They’re so good that we back them with our Lifetime Warranty. Buy them once, play them for life.

### SPECIFICATIONS

- 6 Ply 7.5mm Poplar Shells
- Matching Wood Snare Drum
- Wood Bass Drum Hoops
- I.S.S. Tom Mounting System
- 790 Series Double Braced Hardware
- Remo Snare Drum Heads
- Remo Clear Tom Heads
- Remo Powerstroke Bass Drum Heads
- 5A Drum Sticks
- Lifetime Warranty

### Forum FZH Model Numbers Specification Chart

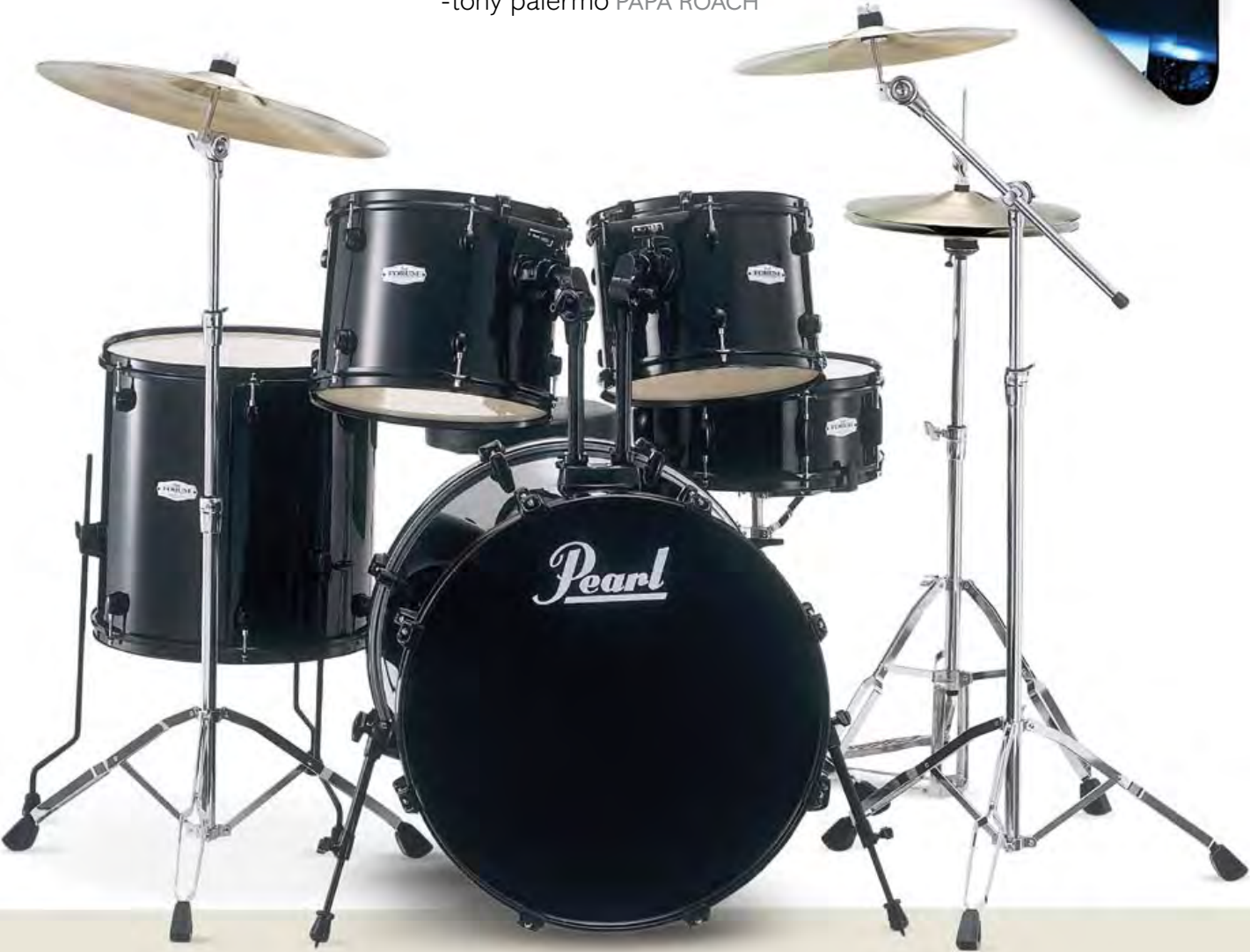
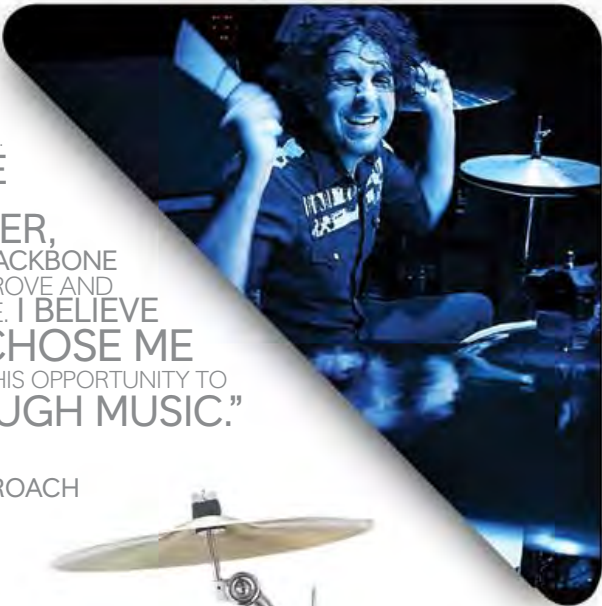
/C : Chrome Drum Hardware, /B : Black Drum Hardware

	FZH725	FZH705D
Bass Drum	2218B 22"x18"	2018B 20"x18"
Tom Toms	1209T 12"x9"	1008T 10"x8"
	1310T 13"x10"	1209T 12"x9"
Floor Tom	1616F 16"x16"	1414F 14"x14"
Snare Drum	1455S 14"x5.5"	1455S 14"x5.5"
Ride Cymbal	20"	20"
Crash Cymbal	16"	16"
Hi-Hat Cymbals	14" (1pr.)	14" (1pr.)

THERE IS NOTHING ELSE I’VE TRIED THAT COMPARES TO THE SURGE OF ADRENALIN EXPERIENCED WHEN PERFORMING IN A LIVE SITUATION. I TAKE GREAT PRIDE IN THE RESPONSIBILITY I HAVE PUT UPON MYSELF

AS THE DRUMMER, BECAUSE WE ARE THE MUSICAL BACKBONE AND I WANT TO CONTINUALLY PROVE AND VALIDATE OUR IMPORTANCE. I BELIEVE THAT THE DRUMS CHOSE ME AND I AM FOREVER GRATEFUL TO HAVE THIS OPPORTUNITY TO EXPRESS MYSELF THROUGH MUSIC.”

-tony palermo PAPA ROACH



## FORUM SERIES

No. 33 Jet Black FZH725/B

### Covered Finishes



### Forum FZH Model Numbers Specification Chart

/C : Chrome Drum Hardware, /B : Black Drum Hardware

	FZH725	FZH705D
Tom Holders	TH-70I (x2)	TH-70I (x2)
Hi-Hat Stand	H-790	H-790
Snare Drum Stand	S-790	S-790
Cymbal Stand	C-790	C-790
Cymbal/Boom Stand	B-790	B-790
Drum Pedal	P-900	P-900
Drum Throne	D-790	D-790
Drumsticks	5A	5A





## 'You're on next', and Vision is your step up on the stage.

Do you see yourself in a packed garage, a crowded club, or a sold out stadium? No matter your aspirations, Vision Series will take you there.

Vision is the next step in drumming with stunning wrap and lacquer finishes, 900 Series hardware, and your choice of Maple or Birch shells constructed using Pearl's exclusive Superior Shell Technology. Stand out from the crowd and play the kit that puts you above the rest. Where will your Vision take you?

Pearl offers three shell pack configurations available in Maple or Birch shells. Achieve the warm, rich tone of Maple accompanied by a matching Maple snare drum, or attain the naturally EQ'd sound of Birch complemented by a matching Steel snare drum. These incredible sounding drums come standard with professional two-ply heads and are offered in a variety of finishes including Pearl's proprietary Artisan II Sangria Lacquer finish. Vision Series provides the optimum tone and clarity you've come to expect from Pearl at an attractive price.

Let your Vision kit take you to the next level.

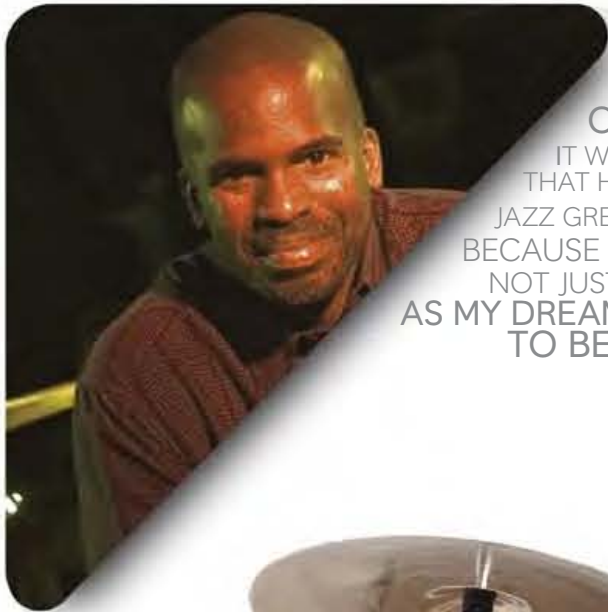


Vision Birch Lacquer VBL925S/C in #230 Clear Birch



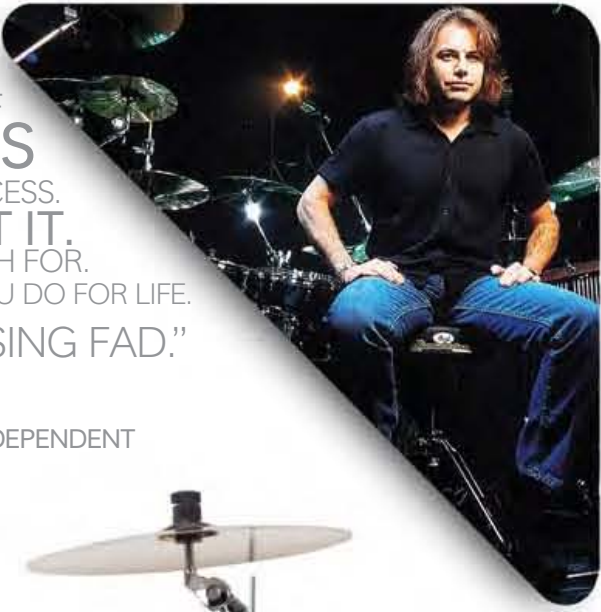
Be the drummer.





MY OLDER BROTHER, HERSHALL PLAYED KEYBOARDS ANDWE WOULD SPEND COUNTLESS HOURS IN OUR PARENTS GARAGE JAMM'N ON SONGS. IT WAS GOOD TIMES AND LOADS OF FUN BUT ALSO HARD WORK TO FEED THAT HUNGRY DESIRE TO BE BETTER PLAYERS.. MUSICIANS LIKE WILLIE AND JAZZ GREAT, TONY WILLIAMS WERE HUGE INSPIRATIONS TO ME BECAUSE THEY PERFORMED AS A PART OF THE MUSIC NOT JUST ALONG WITH IT. I AM INSPIRED TO THIS DAY AS MY DREAMS COME TRUE ON STAGES AROUND THE WORLD TO BE THE BEST MUSICIAN I CAN BE.

- william kennedy THE YELLOWJACKETS



“I’VE ALWAYS PLAYED DRUMS. I MUST HAVE PRACTICED HUNDREDS OF THOUSANDS OF HOURS OVER THE YEARS. IT’S A NEVER-ENDING PROCESS. THAT’S WHAT’S GREAT ABOUT IT. THERE IS ALWAYS ANOTHER GOAL TO REACH FOR. BEING A DRUMMER IS SOMETHING YOU DO FOR LIFE. IT’S NOT A PASSING FAD.”

-jimmy degrasso INDEPENDENT



Nub, world renown artist from Orange County Chopper fame was commissioned to create a one-of-a-kind finish for VBA. Using our exclusive Artisan II process we were able to recreate Nub's Old School Pinstripe technique complete with Nub's signature of authenticity on each drum. Nub's original art work had been on tour with Dream Theater, Korn and Chickenfoot just to name a few. Now you can have that custom pinstripe look on Vision Birch.



SPECIFICATIONS

- 6 Ply 7.5mm Birchply Shells
- Matching Birchply Snare Drum
- Wood Bass Drum Hoops w/Matching Finish
- Remo Snare Drum Heads
- Remo Clear Tom Heads
- Remo PowerStroke Bass Drum Heads
- Reference-Look Bridge Lugs w/Rubber Gaskets
- Reference-Look Floor Tom Leg Brackets & Legs
- Reference-Look Recessed BD Claws w/Rubber Lining
- Award Winning 900 Series Hardware
- 900 Series Uni-Lock Tom Holders
- I.S.S. Tom Mounting System
- Beautiful Artisan II Finishes
- Lifetime Warranty

VISION BIRCH

No.700 Arctic Sparkle VB925S/C



Covered Finishes



Vision VB Model Numbers

Specification Chart

Bass Drums		Tom Toms	
VB2218B/C	22" x 18"	VB0807T/C	8" x 7"
VB2018B/C	20" x 18"	VB1008T/C	10" x 8"
VB2418B/C	24" x 18"	VB1209T/C	12" x 9"
Floor Toms		VB1310T/C	13" x 10"
VB1414F/C	14" x 14"	VB1411T/C	14" x 11"
VB1616F/C	16" x 16"	VB1613T/C	16" x 13"
VB1816F/C	18" x 16"		

SPECIFICATIONS

- 6 Ply 7.5mm Birchply Shells
- Matching Birchply Snare Drum
- Wood Bass Drum Hoops w/Matching Finish
- Remo Snare Drum Heads
- Remo Clear Tom Heads
- Remo PowerStroke Bass Drum Heads
- Reference-Look Bridge Lugs w/Rubber Gaskets
- Reference-Look Floor Tom Leg Brackets & Legs
- Reference-Look Recessed BD Claws w/Rubber Lining
- Award Winning 900 Series Hardware
- 88 Series Uni-Lock Gear Tilters
- I.S.S. Tom Mounting System
- Beautiful High Gloss Covered Finishes
- Lifetime Warranty

VISION BIRCH ARTISAN II

No. 798 Old School Pinstripe VBA925S/C



Artisan II Colors

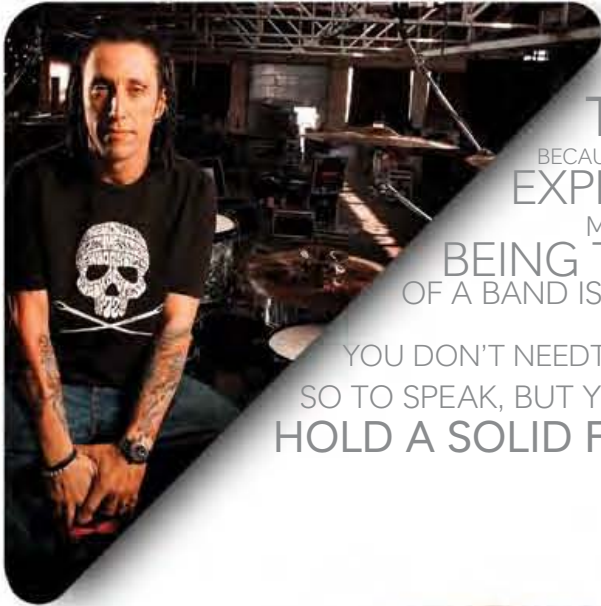


Vision Birch Model Numbers

Specification Chart

Bass Drums		Tom Toms	
VBA2218B/C	22" x 18"	VBA0807T/C	8" x 7"
VBA2018B/C	20" x 18"	VBA1008T/C	10" x 8"
VBA2418B/C	24" x 18"	VBA1209T/C	12" x 9"
Floor Toms		VBA1310T/C	13" x 10"
VBA1414F/C	14" x 14"	VBA1411T/C	14" x 11"
VBA1616F/C	16" x 16"	VBA1613T/C	16" x 13"
VBA1816F/C	18" x 16"		





“I LIKE BEING THE DRUMMER  
BECAUSE I FIND IT TO BE THE BEST WAY FOR ME TO EXPRESS MY EMOTIONS,  
MAINLY THE AGGRESSIVE ONES.  
BEING THE BACKBONE OF A BAND IS A SERIOUS CHALLENGE,  
ONE WHICH I PERSONALLY ENJOY.  
YOU DON'T NEED TO BE A SHREDDER,  
SO TO SPEAK, BUT YOU DO NEED TO HOLD A SOLID FOUNDATION.”

-morgan rose SEVENDUST



SPECIFICATIONS

- 6 Ply 7.5mm 100% Birch Shells
- Steel SensiTone Snare Drum
- Wood Bass Drum Hoops w/Matching Finish
- Remo Snare Drum Heads
- Remo Clear Tom Heads
- Remo PowerStroke Bass Drum Heads
- Reference-Look Bridge Lugs w/Rubber Gaskets
- Reference-Look Floor Tom Leg Brackets & Legs
- Reference-Look Recessed BD Claws w/Rubber Lining
- Award Winning 900 Series Hardware
- 900 Series Uni-Lock Tom Holders
- I.S.S. Tom Mounting System
- Beautiful Super High-Gloss Lacquer Finishes
- Lifetime Warranty

VISION BIRCH LACQUER

No. 239 Graphite VBL925S/C



Lacquer Colors



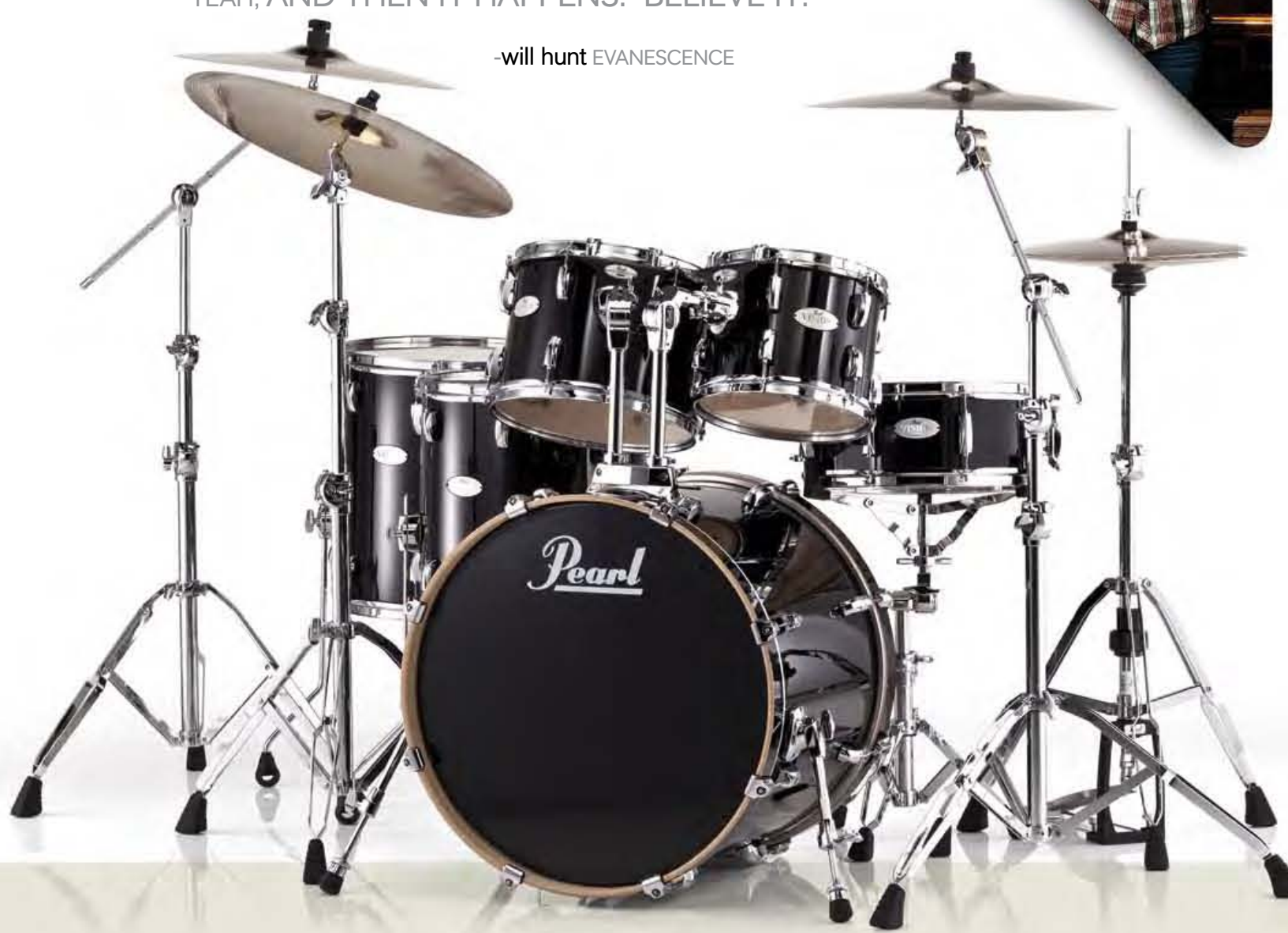
Vision Birch Model Numbers

Specification Chart

Bass Drums		Tom Toms	
VBL2218B/C	22" x 18"	VBL0807T/C	8" x 7"
VBL2018B/C	20" x 18"	VBL1008T/C	10" x 8"
VBL2418B/C	24" x 18"	VBL1209T/C	12" x 9"
Floor Toms		VBL1310T/C	13" x 10"
VBL1414F/C	14" x 14"	VBL1411T/C	14" x 11"
VBL1616F/C	16" x 16"	VBL1613T/C	16" x 13"
VBL1816F/C	18" x 16"		

“WHEN I WAS A KID, I USED TO SIT IN MY ROOM AND BASH MY PEARL DRUMS PLAYING MÖTLEY CRUE AND KISS TUNES UNTIL MY MOM WOULD RUSH IN WITH THE UTTER LOOK OF EXHAUSTION FROM THE HOUSE RATTLING FOR HOURS AND MAKE ME STOP....  
LITTLE DID SHE KNOW THAT SOME YEARS LATER I WOULD PLAY FOR MÖTLEY, BE IN EVANESCENCE, LAND AT #1 ON THE CHARTS, AND SEE THE WORLD.....  
NEITHER DID I, BECAUSE THOSE ARE JUST DREAMS, RIGHT? YEAH, AND THEN IT HAPPENS. BELIEVE IT.”

-will hunt EVANESCENCE



SPECIFICATIONS

- 6 Ply 7.5mm MaplePly Shells
- Matching MaplePly Snare Drum
- Wood Bass Drum Hoops w/Matching Finish
- Remo Snare Drum Heads
- Remo Clear Tom Heads
- Remo PowerStroke Bass Drum Heads
- Reference-Look Bridge Lugs w/Rubber Gaskets
- Reference-Look Floor Tom Leg Brackets & Legs
- Reference-Look Recessed BD Claws w/Rubber Lining
- Bridge-Type Bass Bracket
- 900 Series Uni-Lock Tom Holders
- I.S.S. Tom Mounting System
- Beautiful Super High-Gloss Lacquer Finishes
- Lifetime Warranty

VISION MAPLE LACQUER

No.103 Piano Black VML925S/C with VML 1414F/C, HWP900, BC-900



Lacquer Colors



Vision Maple Model Numbers

Specification Chart

Bass Drums		Tom Toms	
VML2218B/C	22" x 18"	VML0807T/C	8" x 7"
VML2018B/C	20" x 18"	VML1008T/C	10" x 8"
VML2418B/C	24" x 18"	VML1209T/C	12" x 9"
Floor Toms		VML1310T/C	13" x 10"
VML1414F/C	14" x 14"	VML1411T/C	14" x 11"
VML1616F/C	16" x 16"	VML1613T/C	16" x 13"
VML1816F/C	18" x 16"		





## Discover the magic that is Session Studio Classic.

In 1991, amid a world of 100% birch and maple kits, Session dared to be different by blending two different types of wood that allowed the shells to resonate and draw out the best attributes of both woods. The backbone of the Session "Sound" was birch which was used in the inner plies to give Session the outstanding attack, brilliant high-end cut and unmistakable low-end punch. The middle plies were Luan, a softer wood that added warmth and fullness and the finishing touch was an outer layer of birch whose beautiful grain was the perfect canvas for Pearl's thirty one step lacquer finishes.

The Session's balanced tonality offered drummers an instrument with unique character and individuality and it became an instant "Classic" that was played by drummers in all genres, in and out of the studio.

For 2012, the "Classic" is back. Session Studio Classic features blended birch/Kapur/birch shells that capture every nuance of the classic Session "Sound" with the same strong attack and projection with outstanding lows and "feel-it-in-your-chest" punch that the original Sessions were famous for. SSC's new shallow tom sizes achieve a "shorter" note and quicker response that are integral to the classic Session "Sound."



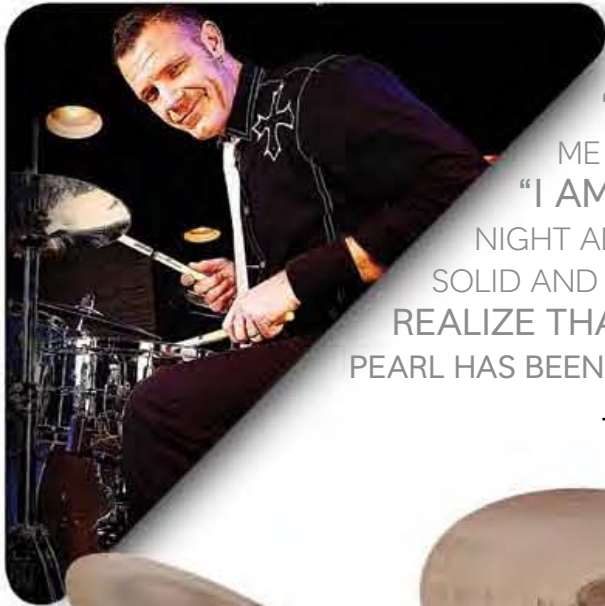
Session Studio Classic in #113 Sheer Blue



Session Studio Classic ready for rehearsal at SRP Nashville

Be the drummer.





“SINCE I WAS TEN, I WANTED TO  
“BE THE DRUMMER.” NOW, NOTHING GIVES  
ME MORE SATISFACTION THAN KNOWING THAT,  
“I AM THE DRUMMER”. I GET TO TAKE THE STAGE  
NIGHT AFTER NIGHT AND PROVIDE THE BAND THE MOST  
SOLID AND CONSISTENT GROOVE POSSIBLE. EVERY NIGHT, I  
REALIZE THAT MY DREAMS HAVE COME TRUE AND  
PEARL HAS BEEN THERE THE WHOLE WAY!”-

- tracy broussard BLAKE SHELTON



“I AM HONORED AND PROUD  
TO BE A MEMBER OF THE PEARL FAMILY  
FOR WELL OVER A DECADE NOW.  
THEIR DRUMS AND HARDWARE ARE THE  
**ABSOLUTE BEST** IN QUALITY AND RELIABILITY  
BOTH IN THE STUDIO AND ON TOUR AND THEIR SUPPORT  
IS UNMATCHED IN THE BUSINESS!”

-mike wengren DISTURBED



## SESSION STUDIO CLASSIC

No. 110 Sequoia Red

### SPECIFICATIONS

- 6 ply SESSION-formula shells
- Wood bass drum hoops w/matching finish
- Recessed bd claws w/rubber lining
- Remo snare drum heads
- Remo pinstripe tom batter/clear reso heads
- Remo powerstroke bass drum heads
- RI-10/20 session lugs
- Lb/lg-40 masters floor tom brackets & legs
- Optimount tom holders

**Bass Drum:** SSC 2216BX/C **Toms:** SSC 1007T/C, SSC 1208T/C **Floor Toms:** SSC 1414F/C, SSC 1614F/C  
**Snare Drum:** STE 1465S **Hardware:** P-900, H-900, S-900, BC-900, C-900, TC-900 X 2

### High-Gloss Lacquer Colors



#103  
Piano Black



#110  
Sequoia Red



#113  
Sheer Blue



## SESSION STUDIO CLASSIC

No. 103 Piano Black

**Bass Drum:** SSC 2016BX/C **Toms:** SSC 1007T/C, SSC 1208T/C  
**Floor Toms:** SSC 1414F/C, SSC 1614F/C **Snare Drum:** SSC 1455S/C  
**Hardware:** P-900, H-900, S-900, BC-900,

### Session Studio Classic

#### Model Numbers

#### Specification Chart

Bass Drums		Toms	
SSC 2016BX/C	20" x 16"	SSC 1007T/C	10" x 7"
SSC 2216BX/C	22" x 16"	SSC 1208T/C	12" x 8"
SSC 2415BX/C	24" x 15"	SSC 1309T/C	13" x 9"
Floor Toms		SSC 1410T/C	14" x 10"
SSC 1414F/C	14" x 14"	Snare Drums	
SSC 1614F/C	16" x 14"	SSC 1465S/C	14" x 5.5"
SSC 1616F/C	16" x 16"	SSC 1465S/C	14" x 6.5"
SSC 1816F/C	18" x 16"		





## Book the room and bring the talent with Masters MCX.

There are few kits, if any, more revered in modern drum history than Pearl's legendary Masters Series drums. The incredible warm, resonate, fully bodied tone of Pearls all Maple Master Series has filled stages all across the world, played by many of the most renowned artists in music today, and has been prominently featured on far too many chart breaking recordings to count. This amazing drum sound can be yours today with Masters MCX. Featuring ultra-high gloss, stunning lacquer finishes such as Vintage Wine and classic Piano Black, and spectacular Artisan II lacquer finishes such as Quilted Bubinga Sunburst, Mocha Tamo, and classic Natural Birdseye Maple, these drums will undoubtedly be the envy of every drummer in the crowd. The legendary sound of Pearl lives on with Masters MCX.



Masters MCX #800 Quilted Bubinga Sunburst



Be the drummer.